



The North of England Inclusion Conference

Workshop F – Inclusion Quality Mark

Joe McCann and Natalie Menagh

Monday 11th March 2019
The Principal Hotel, York

#NEIC19



Inclusion Quality Mark



**Introduction
to the
IQM Award**

 IQM

Inclusion Quality Mark

 IQM

An effective school must be an inclusive school. Gaining the IQM Inclusive Schools Award Mark does not depend on the school's attainment in exam results but instead it focuses on learning and achievement in its widest sense and looks at how schools see **differences as opportunities for learning.**" IQM handbook, 2008.

IQM enables schools/colleges to benchmark their inclusive practice as part of an ongoing audit.



 IQM

Inclusion Quality Mark

 IQM

Current Position

- IQM is currently working with more than 5,500 schools which is increasing on a daily basis.
- Working in support of a number of local authorities and academy chains



 IQM

Inclusion Quality Mark

 IQM

What is Inclusion?

- Raising achievement for all.
- Creating the environment which provides the opportunity for all to succeed.
- Promoting access and diversity to their fullest extent.



 IQM

Inclusion Quality Mark

 IQM

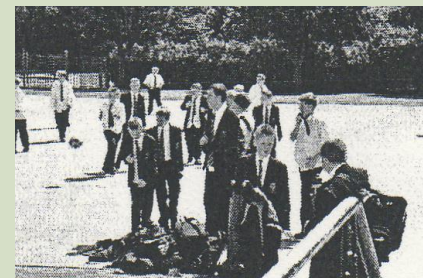
How does IQM contribute to the whole school improvement/effectiveness programme?

- Self evaluation.
- School improvement planning.
- Training & advisory input including bespoke CPD programmes.



Who can apply to do the Inclusion Quality Mark?

- Mainstream Schools
 - Primary
 - Secondary
 - Colleges
- Special Schools
 - Primary
 - Secondary
 - Colleges
- Independent & International Schools
 - Primary
 - Secondary
 - Colleges

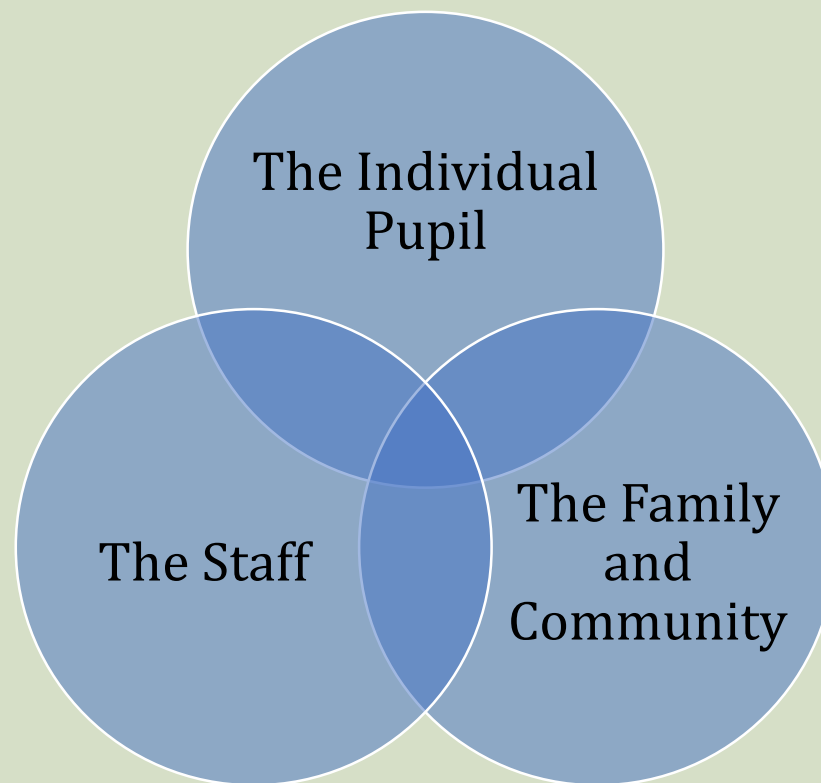


IQM

Inclusion Quality Mark

IQM

The Three Core Groups



The Self-Evaluation Report (SER)

1. The Inclusion Values and Practice of the School.
2. The Learning Environment, Resources and ICT.
3. Learner Attitudes, Values and Personal Development.
4. Learner Progress and the Impact on Learning.
5. Learning and Teaching .
6. Parents, Carers and Guardians.
7. Governing Body and Management, External Accountability/Support.
8. The School in the Community.





Inclusion Quality Mark



Next Steps

Centre of Excellence



Inclusion Quality Mark



Inclusion Cluster Groups



Inclusion Quality Mark



Who?



What?



Cluster Meetings



As part of the Flagship & Centre of Excellence programmes, IQM cluster groups have been set up all across the country. Each Centre of Excellence and Flagship School will have been allocated a cluster group and assigned an IQM Ambassador. Each group will meet at least once per term with possible additional meetings being set up between individual schools. This is an excellent avenue for Flagship schools to use to develop their project further and test hypothesis developed in school. The table below is a record of cluster meetings attended and the impact these have had on your individual school, (please complete as fully as possible). This record will be used as part of your future reviews.

Impact of Cluster Meetings

Date of Meeting	Location of Meeting	Topic(s)	Outcome(s) for School

 IQM

Inclusion Quality Mark

 IQM

Why?

- Celebration
- Collaboration
- Capacity





IQM

Inclusion Quality Mark



IQM

- Creating safe, happy and exceptional students through the ongoing development of curriculum and assessment.
- Drama and Self-Esteem
- Inclusion in Practice
- Transition
- Leadership for Inclusive Practices
- From Good to Outstanding
- iPeace and Restorative Practices
- Maximizing the impact of TAs
- Teaching & Learning



 IQM

Inclusion Quality Mark

 IQM

- Managing the Needs of Learners who are New to the UK
- Intervention and Monitoring of Disadvantaged Pupils
- Pupil Nurture and Well-Being
- Behaviour and Mental Health
- Student Ethos and Culture
- The Use of Computing and Mobile Technology to Enhance Learning for All Learners
- Inclusion for All (LGBT+)
- A Research Informed Approach to Inclusive Practice
- Inclusive Community Working for the Benefit of Our Stakeholders
- Outdoor Learning - Forest School
- Attachment Theories, Issues and Practice





Inclusion Quality Mark



 IQM

Inclusion Quality Mark

 IQM

If you were offered...

- top-quality professional development
- delivered by expert practitioners
- in real-life contexts
- for free

...would you say yes?





Inclusion Quality Mark



IQM Cluster Groups





Inclusion Quality Mark



For Additional Information

Email: info@iqmaward.com

Website: www.iqmaward.com

Tel: **02871 277857**